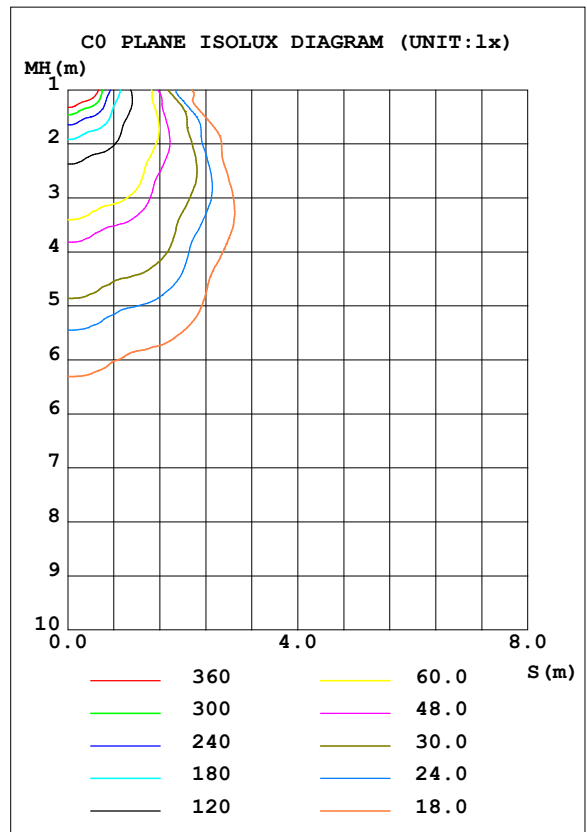
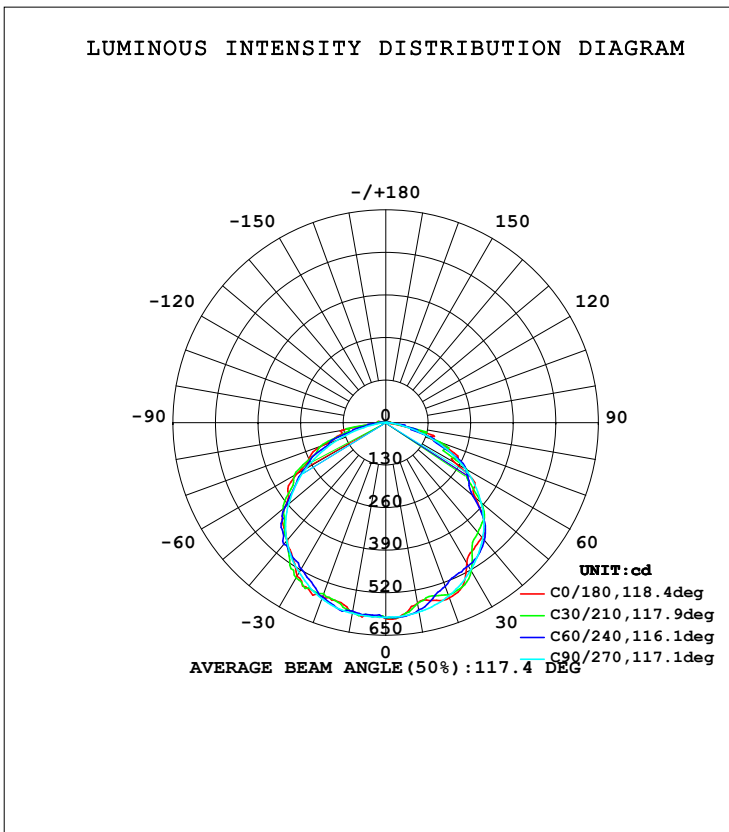


LUMINAIRE PHOTOMETRIC TEST REPORT

Test:U:221.0V I:0.0560A P:11.90W PF:0.9560 Lamp Flux:1800.06x1 lm		
NAME: T8 120 ALTO FLUJO 12W	TYPE:T8 120 ALTO FLUJO 12W	WEIGHT:
SPEC.:	DIM.:	SERIAL No.:
MFR.: DURALED	SUR.:	PROTECTION ANGLE:

DATA OF LAMP		PHOTOMETRIC DATA Eff: 151.27 lm/W			
MODEL T8	120 ALTO FLUJO 12W	I _{max} (cd)	601.0	S/MH (C0/180)	1.31
NOMINAL POWER (W)	12	LOR (%)	100.0	S/MH (C90/270)	1.32
RATED VOLTAGE (V)	AC220V	TOTAL FLUX (lm)	1800.1	η UP, DN (C0-180)	0.3, 49.5
NOMINAL FLUX (lm)	1800.06	CIE CLASS	DIRECT	η UP, DN (C180-360)	0.4, 49.8
LAMPS INSIDE	1	η up (%)	0.7	CIBSE SHR NOM	1.25
TEST VOLTAGE (V)	221.1	η down (%)	99.3	CIBSE SHR MAX	1.35



C Range: 0 - 360DEG
 C Interval: 15.0DEG
 Test Speed: HIGH
 Temperature: 25.3DEG
 Operators: YU
 Test Date: 2019-01-11

γ Range: 0 - 180DEG
 γ Interval: 1.0DEG
 Test System: EVERFINE GO-2000B_V1 SYSTEM V2.0.287
 Humidity: 65.0%
 Test Distance: 8.000m [K=1.0000]
 Remarks:

ZONAL FLUX DIAGRAM

ZONAL FLUX DIAGRAM:

γ	C0	C45	C90	C135	C180	C225	C270	C315	γ	Φ zone	Φ total	%lum, lamp
10	560.7	571.7	587.5	587.1	585.6	592.5	591.4	563.5	0- 10	56.00	56.00	3.11,3.11
20	569.4	540.4	563.5	547.5	565.7	555.6	572.7	549.2	10- 20	160.5	216.5	12,12
30	495.4	530.4	519.7	527.2	542.6	539.6	529.6	536.2	20- 30	250.9	467.4	26,26
40	457.4	430.2	461.1	480.1	468.3	480.7	471.1	426.6	30- 40	306.6	774.0	43,43
50	359.1	374.6	380.9	387.9	402.3	392.2	387.7	382.9	40- 50	326.8	1101	61.2,61.2
60	243.7	259.1	279.3	303.7	312.8	298.9	282.9	254.5	50- 60	301.1	1402	77.9,77.9
70	152.6	148.8	157.3	189.6	205.1	185.7	156.9	165.8	60- 70	228.6	1631	90.6,90.6
80	17.23	77.14	44.84	87.14	137.9	83.47	40.47	41.22	70- 80	125.9	1757	97.6,97.6
90	13.06	11.13	2.924	13.83	16.98	15.33	2.120	12.54	80- 90	30.89	1787	99.3,99.3
100	6.801	6.398	4.060	8.777	22.52	7.374	3.247	5.940	90-100	12.17	1800	100,100
110	0	0	0	0	0	0	0	0	100-110	0.4672	1800	100,100
120	0	0	0	0	0	0	0	0	110-120	0	1800	100,100
130	0	0	0	0	0	0	0	0	120-130	0	1800	100,100
140	0	0	0	0	0	0	0	0	130-140	0	1800	100,100
150	0	0	0	0	0	0	0	0	140-150	0	1800	100,100
160	0	0	0	0	0	0	0	0	150-160	0	1800	100,100
170	0	0	0	0	0	0	0	0	160-170	0	1800	100,100
180	0	0	0	0	0	0	0	0	170-180	0	1800	100,100
DEG	LUMINOUS INTENSITY:cd									UNIT:lm		

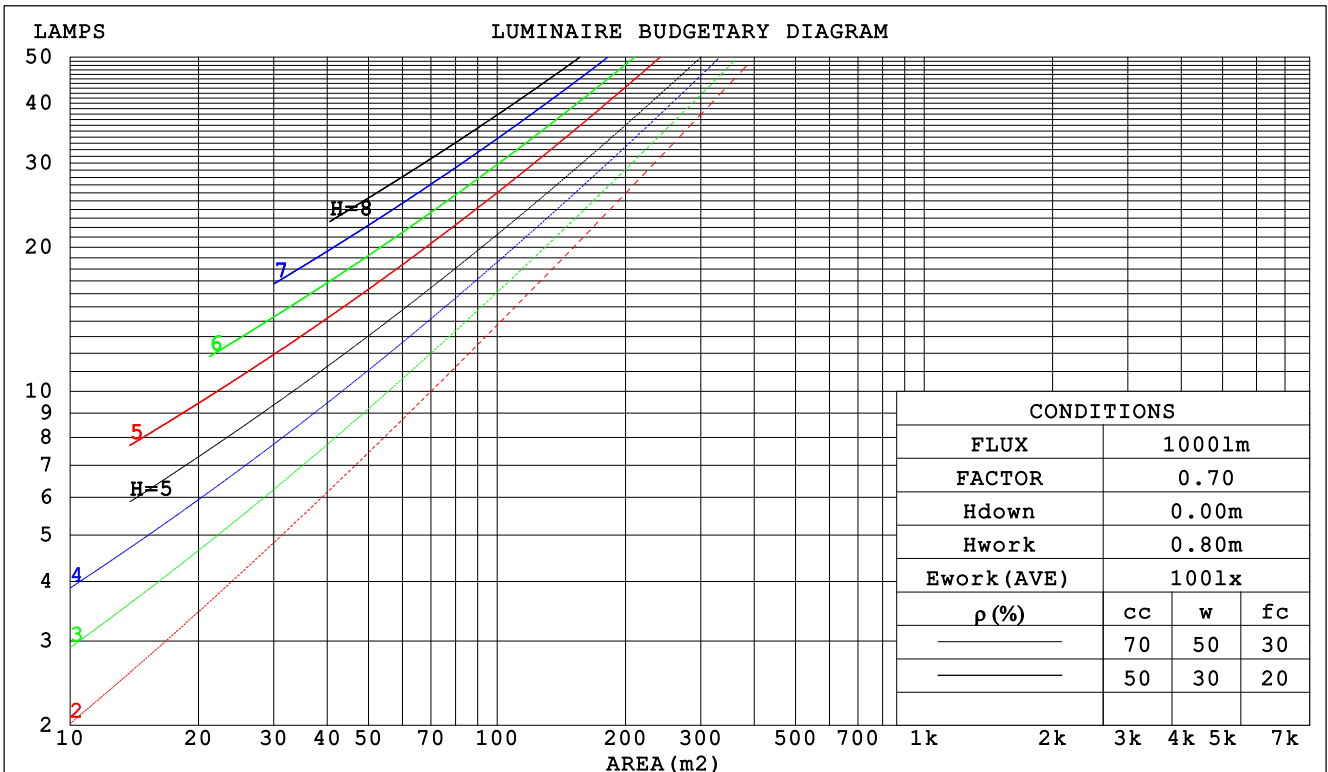
C Range: 0 - 360DEG
 C Interval: 15.0DEG
 Test Speed: HIGH
 Temperature:25.3DEG
 Operators:YU
 Test Date:2019-01-11

γ Range: 0 - 180DEG
 γ Interval: 1.0DEG
 Test System:EVERFINE GO-2000B_V1 SYSTEM V2.0.287
 Humidity:65.0%
 Test Distance:8.000m [K=1.0000]
 Remarks:

CU AND LUMINAIRE BUDGETARY ESTIMATE DIAGRAM

Test:U:221.0V I:0.0560A P:11.90W PF:0.9560 Lamp Flux:1800.06x1 lm		
NAME: T8 120 ALTO FLUJO 12W	TYPE:T8 120 ALTO FLUJO 12W	WEIGHT:
SPEC.:	DIM.:	SERIAL No.:
MFR.: DURALED	SUR.:	PROTECTION ANGLE:

ρ_{cc}	80%			70%			50%			30%			10%			0
ρ_w	50%	30%	10%	50%	30%	10%	50%	30%	10%	50%	30%	10%	50%	30%	10%	0
ρ_{fc}	20%			20%			20%			20%			20%			0
RCR	RCR:Room Cavity Ratio						Coefficients of Utilization(CU)									
0.0	1.19	1.19	1.19	1.16	1.16	1.16	1.11	1.11	1.11	1.06	1.06	1.06	1.01	1.01	1.01	.99
1.0	1.04	.99	.95	1.01	.97	.94	.97	.94	.91	.93	.90	.88	.89	.87	.85	.83
2.0	.90	.83	.77	.88	.82	.76	.84	.79	.74	.81	.77	.73	.78	.74	.71	.69
3.0	.79	.71	.64	.77	.70	.63	.74	.68	.62	.71	.66	.61	.69	.64	.60	.58
4.0	.70	.61	.54	.68	.60	.54	.66	.58	.53	.63	.57	.52	.61	.56	.51	.49
5.0	.62	.53	.46	.61	.52	.46	.59	.51	.45	.57	.50	.45	.55	.49	.44	.42
6.0	.56	.47	.40	.55	.46	.40	.53	.45	.40	.51	.44	.39	.49	.43	.39	.37
7.0	.50	.42	.35	.50	.41	.35	.48	.40	.35	.46	.40	.35	.45	.39	.34	.32
8.0	.46	.37	.31	.45	.37	.31	.44	.36	.31	.43	.36	.31	.41	.35	.31	.29
9.0	.42	.34	.28	.42	.34	.28	.40	.33	.28	.39	.33	.28	.38	.32	.28	.26
10.0	.39	.31	.26	.38	.31	.25	.37	.30	.25	.36	.30	.25	.35	.29	.25	.23



C Range: 0 - 360DEG
 C Interval: 15.0DEG
 Test Speed: HIGH
 Temperature:25.3DEG
 Operators:YU
 Test Date:2019-01-11

γ Range: 0 - 180DEG
 γ Interval: 1.0DEG
 Test System:EVERFINE GO-2000B_V1 SYSTEM V2.0.287
 Humidity:65.0%
 Test Distance:8.000m [K=1.0000]
 Remarks:

WEC AND CCEC

Test:U:221.0V I:0.0560A P:11.90W PF:0.9560 Lamp Flux:1800.06x1 lm		
NAME: T8 120 ALTO FLUJO 12W	TYPE:T8 120 ALTO FLUJO 12W	WEIGHT:
SPEC.:	DIM.:	SERIAL No.:
MFR.: DURALED	SUR.:	PROTECTION ANGLE:

ρ _{cc}	80%			70%			50%			30%			10%			0
ρ _w	50%	30%	10%	50%	30%	10%	50%	30%	10%	50%	30%	10%	50%	30%	10%	0
ρ _{fc}	20%			20%			20%			20%			20%			0
RCR	RCR:Room Cavity Ratio						Wall Exitance Coefficients (WEC)									
0.0																
1.0	.311	.177	.056	.303	.173	.055	.290	.166	.053	.277	.160	.051	.266	.154	.050	
2.0	.293	.161	.049	.287	.158	.049	.275	.153	.047	.264	.148	.046	.253	.143	.045	
3.0	.272	.145	.043	.266	.143	.043	.256	.138	.042	.246	.135	.041	.236	.131	.041	
4.0	.251	.130	.038	.246	.129	.038	.237	.125	.037	.228	.122	.037	.219	.119	.036	
5.0	.232	.118	.034	.228	.117	.034	.219	.114	.034	.211	.111	.033	.204	.109	.033	
6.0	.215	.108	.031	.211	.107	.031	.204	.104	.030	.197	.102	.030	.190	.100	.030	
7.0	.200	.099	.028	.197	.098	.028	.190	.096	.028	.184	.094	.027	.178	.092	.027	
8.0	.187	.091	.026	.184	.090	.026	.178	.089	.025	.172	.087	.025	.167	.086	.025	
9.0	.175	.085	.024	.172	.084	.024	.167	.082	.023	.162	.081	.023	.157	.080	.023	
10.0	.165	.079	.022	.162	.078	.022	.157	.077	.022	.152	.076	.022	.148	.074	.021	

ρ _{cc}	80%			70%			50%			30%			10%			0
ρ _w	50%	30%	10%	50%	30%	10%	50%	30%	10%	50%	30%	10%	50%	30%	10%	0
ρ _{fc}	20%			20%			20%			20%			20%			0
RCR	RCR:Room Cavity Ratio						Ceiling Cavity Exitance Coefficients (CCEC)									
0.0	.196	.196	.196	.167	.167	.167	.114	.114	.114	.066	.066	.066	.021	.021	.021	
1.0	.186	.162	.140	.159	.139	.120	.109	.095	.083	.063	.055	.048	.020	.018	.016	
2.0	.178	.137	.103	.152	.118	.089	.104	.082	.062	.060	.048	.036	.019	.015	.012	
3.0	.170	.120	.079	.146	.103	.069	.100	.072	.048	.058	.042	.028	.019	.014	.009	
4.0	.163	.107	.064	.140	.092	.055	.096	.064	.039	.056	.038	.023	.018	.012	.008	
5.0	.155	.096	.052	.133	.083	.046	.092	.058	.032	.053	.034	.019	.017	.011	.006	
6.0	.148	.088	.044	.127	.076	.039	.088	.053	.027	.051	.031	.016	.016	.010	.005	
7.0	.141	.081	.039	.122	.070	.034	.084	.049	.024	.049	.029	.014	.016	.009	.005	
8.0	.135	.075	.034	.116	.065	.030	.080	.046	.021	.047	.027	.013	.015	.009	.004	
9.0	.129	.070	.031	.111	.061	.027	.077	.043	.019	.045	.025	.011	.015	.008	.004	
10.0	.123	.066	.028	.106	.057	.024	.074	.040	.017	.043	.024	.010	.014	.008	.003	

C Range: 0 - 360DEG
 C Interval: 15.0DEG
 Test Speed: HIGH
 Temperature:25.3DEG
 Operators:YU
 Test Date:2019-01-11

γ Range: 0 - 180DEG
 γ Interval: 1.0DEG
 Test System:EVERFINE GO-2000B_V1 SYSTEM V2.0.287
 Humidity:65.0%
 Test Distance:8.000m [K=1.0000]
 Remarks:

UGR(Unified Glare Rating) Table

Test:U:221.0V I:0.0560A P:11.90W PF:0.9560 Lamp Flux:1800.06x1 lm										
NAME: T8 120 ALTO FLUJO 12W					TYPE:T8 120 ALTO FLUJO 12W			WEIGHT:		
SPEC.:					DIM.:			SERIAL No.:		
MFR.: DURALED					SUR.:			PROTECTION ANGLE:		
ceiling/cavity	0.7	0.7	0.5	0.5	0.3	0.7	0.7	0.5	0.5	0.3
walls	0.5	0.3	0.5	0.3	0.3	0.5	0.3	0.5	0.3	0.3
working plane	0.2	0.2	0.2	0.2	0.2	0.2	0.2	0.2	0.2	0.2
Room dimensions	Viewed crosswise					Viewed endwise				
x = 2H y = 2H	26.6	28.2	26.9	28.4	28.6	27.0	28.5	27.3	28.7	29.0
3H	28.2	29.6	28.5	29.9	30.1	28.2	29.6	28.5	29.8	30.1
4H	29.0	30.4	29.4	30.6	30.9	28.7	30.0	29.0	30.3	30.5
6H	29.1	30.4	29.5	30.7	31.0	28.9	30.1	29.2	30.4	30.7
8H	29.1	30.3	29.4	30.6	30.9	28.9	30.1	29.2	30.4	30.7
12H	29.0	30.2	29.4	30.5	30.8	28.9	30.0	29.2	30.3	30.7
4H 2H	27.2	28.6	27.5	28.8	29.1	27.5	28.8	27.8	29.1	29.4
3H	29.0	30.1	29.3	30.5	30.8	28.9	30.1	29.3	30.4	30.7
4H	29.9	31.0	30.3	31.3	31.7	29.5	30.5	29.9	30.9	31.2
6H	30.1	31.0	30.5	31.4	31.8	29.8	30.7	30.2	31.1	31.5
8H	30.1	30.9	30.5	31.3	31.7	29.8	30.7	30.2	31.1	31.5
12H	30.0	30.9	30.5	31.3	31.7	29.8	30.6	30.3	31.0	31.5
8H 4H	30.2	31.1	30.6	31.5	31.9	29.8	30.7	30.2	31.0	31.4
6H	30.4	31.1	30.9	31.6	32.0	30.2	30.9	30.7	31.4	31.8
8H	30.4	31.0	30.8	31.5	31.9	30.3	31.0	30.8	31.4	31.9
12H	30.4	30.9	30.9	31.4	31.9	30.4	30.9	30.9	31.4	31.9
12H 4H	30.2	31.0	30.6	31.4	31.8	29.8	30.6	30.2	31.0	31.4
6H	30.4	31.1	30.9	31.5	32.0	30.2	30.9	30.7	31.3	31.8
8H	30.4	31.0	30.9	31.4	31.9	30.3	30.9	30.8	31.3	31.8
Variations with the observer position at spacings:										
S = 1.0H	+ 0.3 / - 0.4					+ 0.2 / - 0.3				
1.5H	+ 0.7 / - 0.9					+ 0.1 / - 0.3				
2.0H	+ 1.0 / - 1.0					+ 0.5 / - 0.7				

CIE Pub.117 Corrected 1800 lm Total Lamp Luminous Flux. (8log(F/F0) = 2.0)

C Range: 0 - 360DEG
 C Interval: 15.0DEG
 Test Speed: HIGH
 Temperature:25.3DEG
 Operators:YU
 Test Date:2019-01-11

γ Range: 0 - 180DEG
 γ Interval: 1.0DEG
 Test System:EVERFINE GO-2000B_V1 SYSTEM V2.0.287
 Humidity:65.0%
 Test Distance:8.000m [K=1.0000]
 Remarks:

UTILIZATION FACTORS TABLE

Test:U:221.0V I:0.0560A P:11.90W PF:0.9560 Lamp Flux:1800.06x1 lm		
NAME: T8 120 ALTO FLUJO 12W	TYPE:T8 120 ALTO FLUJO 12W	WEIGHT:
SPEC.:	DIM.:	SERIAL No.:
MFR.: DURALED	SUR.:	PROTECTION ANGLE:

REFLECTANCE										
Ceiling	0.8	0.8	0.8	0.7	0.7	0.7	0.5	0.5	0.5	0
Walls	0.7	0.5	0.3	0.7	0.5	0.3	0.7	0.5	0.3	0
Working plane	0.2	0.2	0.2	0.2	0.2	0.2	0.2	0.2	0.2	0
ROOM INDEX	UTILIZATION FACTORS (PERCENT) $k(RI) \times RCR = 5$									
k = 0.60	56	45	38	56	44	38	54	44	37	31
0.80	67	55	47	66	54	47	64	54	47	40
1.00	75	64	56	74	63	56	72	65	56	48
1.25	82	72	64	81	71	64	78	69	63	56
1.50	87	77	70	86	76	70	83	75	69	61
2.00	94	86	79	93	84	78	89	82	77	69
2.50	98	90	84	96	89	83	92	86	81	73
3.00	102	95	89	100	93	88	95	90	86	77
4.00	106	100	95	103	98	94	99	95	91	82
5.00	108	103	99	106	101	98	101	98	95	85
ROOM INDEX	UF(total)									Direct
According to DIN EN 13032-2 2004			Suspended				SHRNOM = 1.25			

C Range: 0 - 360DEG
 C Interval: 15.0DEG
 Test Speed: HIGH
 Temperature:25.3DEG
 Operators:YU
 Test Date:2019-01-11

γ Range: 0 - 180DEG
 γ Interval: 1.0DEG
 Test System:EVERFINE GO-2000B_V1 SYSTEM V2.0.287
 Humidity:65.0%
 Test Distance:8.000m [K=1.0000]
 Remarks:

ISOCANDELA DIAGRAM

Test:U:221.0V I:0.0560A P:11.90W PF:0.9560 Lamp Flux:1800.06x1 lm		
NAME: T8 120 ALTO FLUJO 12W	TYPE:T8 120 ALTO FLUJO 12W	WEIGHT:
SPEC.:	DIM.:	SERIAL No.:
MFR.: DURALED	SUR.:	PROTECTION ANGLE:

Conical surface Flux(90deg):

937.59 lm

%lum = 52.1%

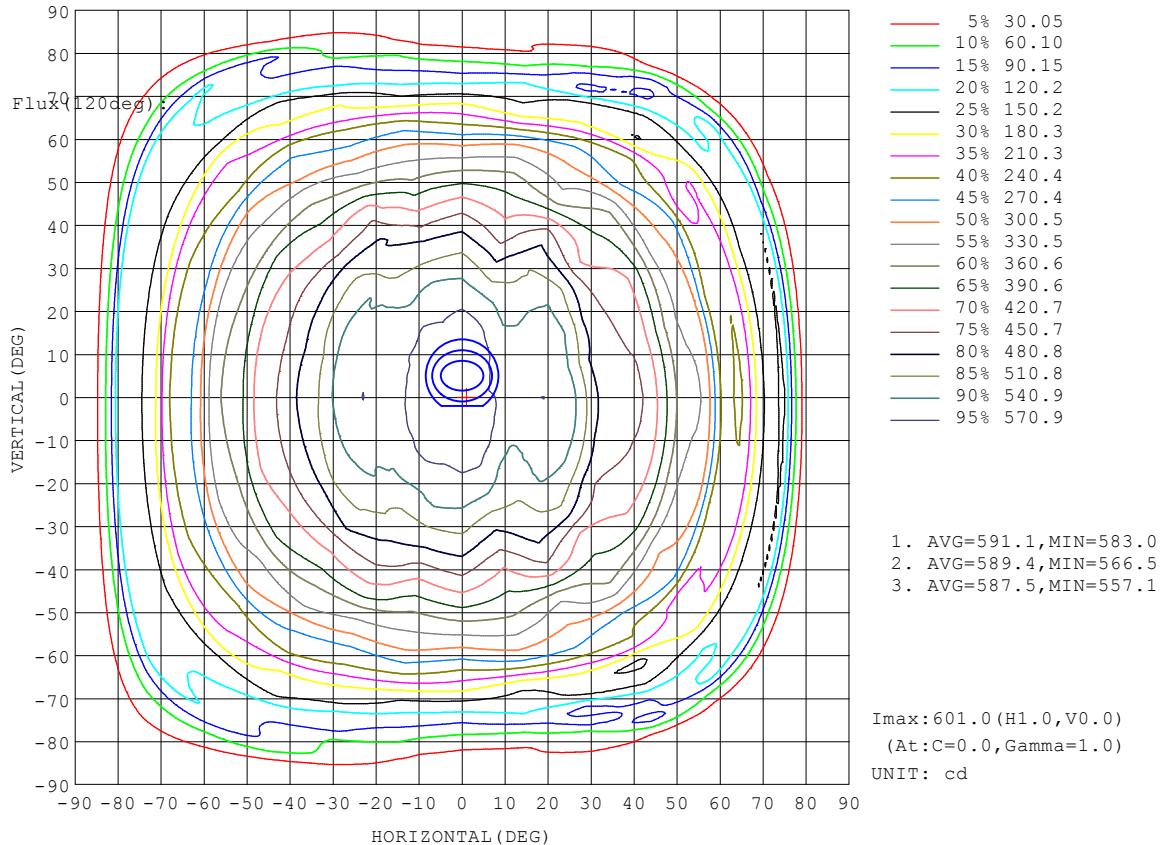
%lamp = 52.1%

Conical surface Flux(20deg):

1402 lm

%lum = 77.9%

%lamp = 77.9%

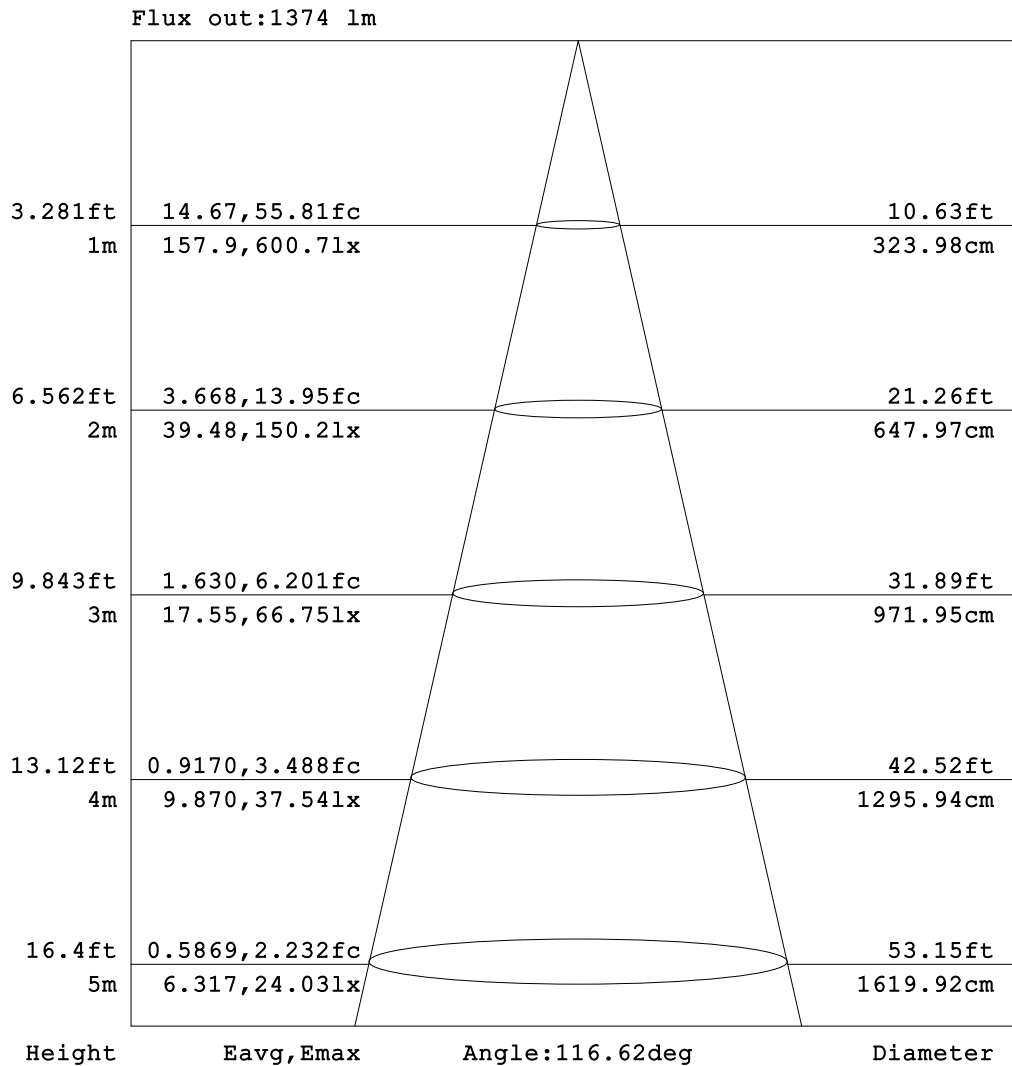


C Range: 0 - 360DEG
 C Interval: 15.0DEG
 Test Speed: HIGH
 Temperature:25.3DEG
 Operators:YU
 Test Date:2019-01-11

γ Range: 0 - 180DEG
 γ Interval: 1.0DEG
 Test System:EVERFINE GO-2000B_V1 SYSTEM V2.0.287
 Humidity:65.0%
 Test Distance:8.000m [K=1.0000]
 Remarks:

AAI Figure

Test:U:221.0V I:0.0560A P:11.90W PF:0.9560 Lamp Flux:1800.06x1 lm		
NAME: T8 120 ALTO FLUJO 12W	TYPE:T8 120 ALTO FLUJO 12W	WEIGHT:
SPEC.:	DIM.:	SERIAL No.:
MFR.: DURALED	SUR.:	PROTECTION ANGLE:



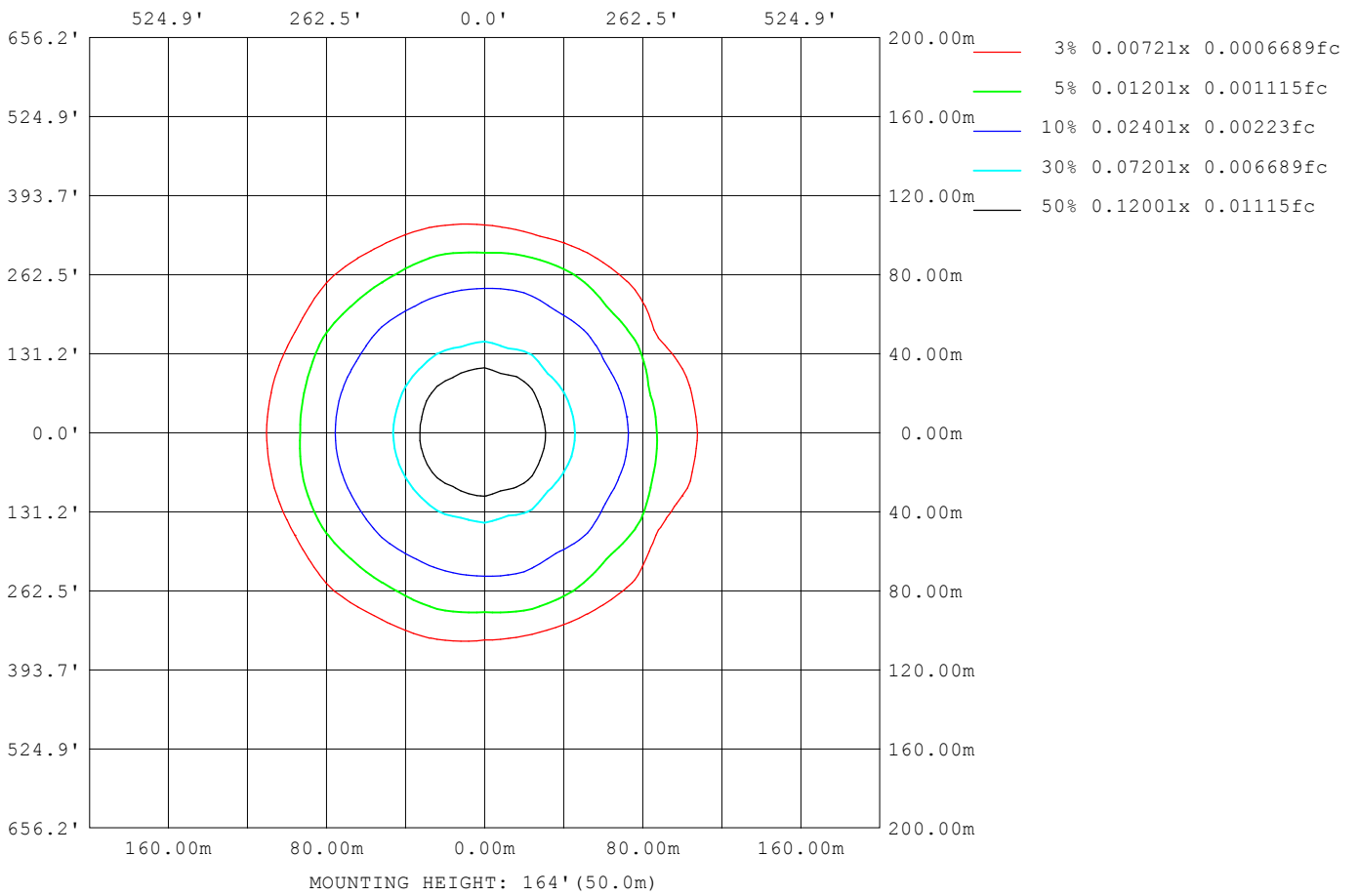
Note:The Curves indicate the illuminated area and the average illumination when the luminaire is at different distance.

C Range: 0 - 360DEG
 C Interval: 15.0DEG
 Test Speed: HIGH
 Temperature:25.3DEG
 Operators:YU
 Test Date:2019-01-11

γ Range: 0 - 180DEG
 γ Interval: 1.0DEG
 Test System:EVERFINE GO-2000B_V1 SYSTEM V2.0.287
 Humidity:65.0%
 Test Distance:8.000m [K=1.0000]
 Remarks:

ISOLUX DIAGRAM

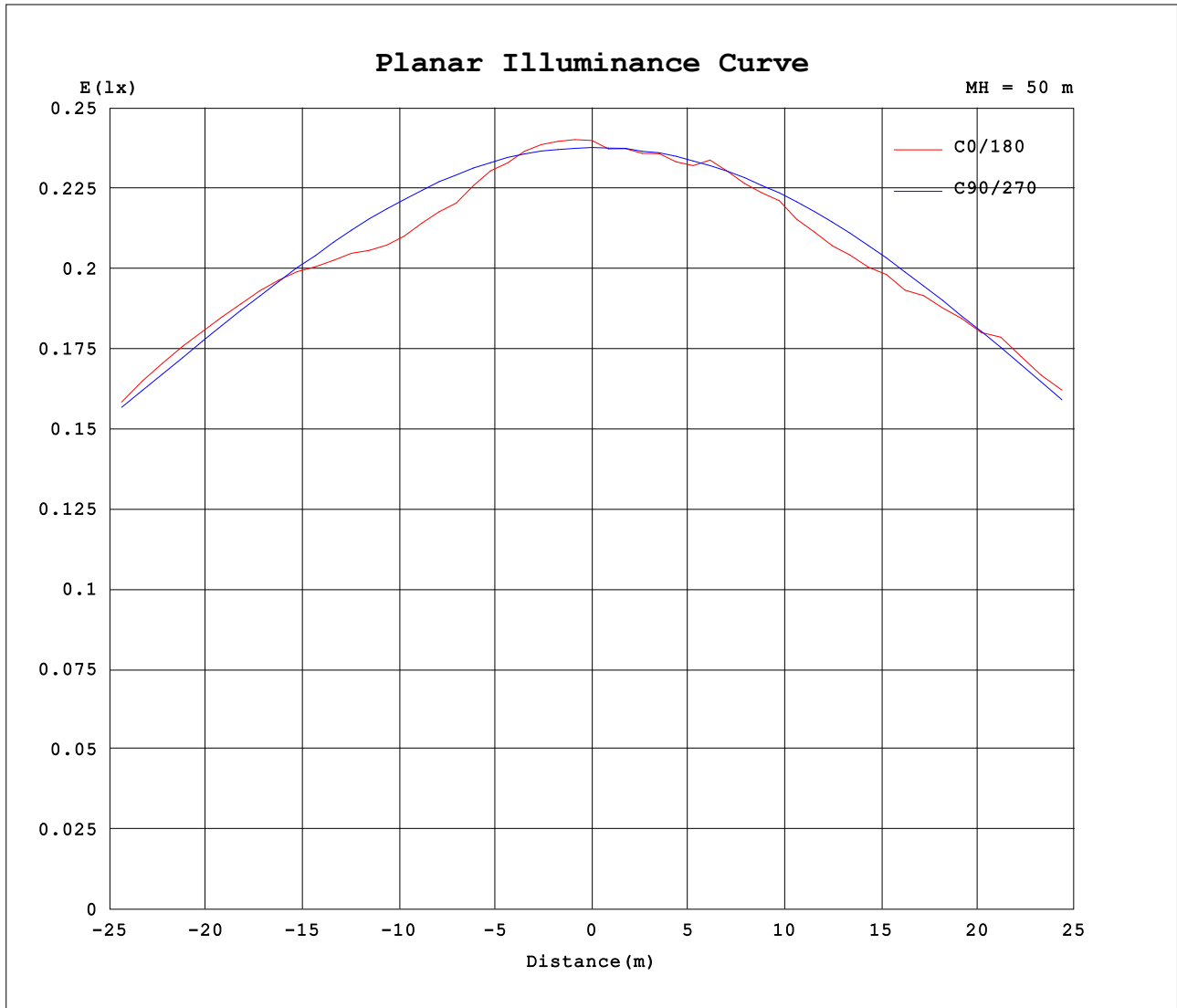
Test:U:221.0V I:0.0560A P:11.90W PF:0.9560 Lamp Flux:1800.06x1 lm		
NAME: T8 120 ALTO FLUJO 12W	TYPE:T8 120 ALTO FLUJO 12W	WEIGHT:
SPEC.:	DIM.:	SERIAL No.:
MFR.: DURALED	SUR.:	PROTECTION ANGLE:



C Range: 0 - 360DEG
 C Interval: 15.0DEG
 Test Speed: HIGH
 Temperature:25.3DEG
 Operators:YU
 Test Date:2019-01-11

γ Range: 0 - 180DEG
 γ Interval: 1.0DEG
 Test System:EVERFINE GO-2000B_V1 SYSTEM V2.0.287
 Humidity:65.0%
 Test Distance:8.000m [K=1.0000]
 Remarks:

Planar Illuminance Curve



C Range: 0 - 360DEG
 C Interval: 15.0DEG
 Test Speed: HIGH
 Temperature: 25.3DEG
 Operators: YU
 Test Date: 2019-01-11

γ Range: 0 - 180DEG
 γ Interval: 1.0DEG
 Test System: EVERFINE GO-2000B_V1 SYSTEM V2.0.287
 Humidity: 65.0%
 Test Distance: 8.000m [K=1.0000]
 Remarks:

LUMINOUS DISTRIBUTION INTENSITY DATA

Test:U:221.0V I:0.0560A P:11.90W PF:0.9560 Lamp Flux:1800.06x1 lm		
NAME: T8 120 ALTO FLUJO 12W	TYPE:T8 120 ALTO FLUJO 12W	WEIGHT:
SPEC.:	DIM.:	SERIAL No.:
MFR.: DURALED	SUR.:	PROTECTION ANGLE:

Table--1

UNIT: cd

C (DEG) γ (DEG)	0	15	30	45	60	75	90	105	120	135	150	165	180	195	210	225	240	255	270
0	600	599	599	598	597	597	595	593	594	594	596	595	600	599	599	598	597	597	595
5	589	590	593	595	595	595	593	585	589	587	591	590	590	588	590	591	589	587	595
10	561	562	561	572	580	589	587	582	583	587	588	584	586	584	588	593	585	586	591
15	562	558	548	548	556	576	578	575	581	573	566	563	567	567	568	579	585	581	586
20	569	567	560	540	532	556	564	556	558	548	554	556	566	567	556	556	567	566	573
25	554	556	553	542	513	528	544	546	531	533	550	563	560	558	557	547	538	556	553
30	495	507	523	530	505	490	520	516	505	527	538	538	543	543	548	540	516	526	530
35	470	466	460	499	493	459	493	485	489	510	513	502	499	499	512	519	500	495	503
40	457	452	438	430	468	423	461	446	468	480	468	472	468	469	471	481	486	454	471
45	425	431	422	397	426	397	424	408	439	426	433	438	443	441	440	431	453	414	433
50	359	365	381	375	348	372	381	369	400	388	402	412	402	405	411	392	402	372	388
55	333	325	307	337	310	340	333	332	336	352	355	358	365	360	354	357	339	339	337
60	244	256	286	259	282	297	279	296	286	304	319	327	313	317	324	299	291	295	283
65	243	237	196	235	223	215	220	241	244	263	254	257	260	255	248	266	247	242	222
70	153	157	177	149	157	144	157	163	179	190	212	226	205	208	213	186	182	156	157
75	152	152	116	104	79.9	113	97.2	108	123	154	138	151	144	143	135	138	115	104	93.4
80	17.2	21.7	33.0	77.1	48.0	52.9	44.8	62.5	76.4	87.1	113	134	138	138	117	83.5	61.8	59.3	40.5
85	13.0	12.6	11.9	10.2	12.6	17.3	12.6	24.6	50.1	47.1	39.6	43.6	25.6	23.4	26.7	27.5	39.2	17.8	10.1
90	13.1	12.6	12.3	11.1	10.1	7.04	2.92	8.74	12.2	13.8	15.2	16.0	17.0	17.0	16.1	15.3	11.9	9.01	2.12
95	13.6	13.2	10.0	7.77	6.42	4.95	3.50	5.73	12.8	21.4	19.9	17.7	21.3	22.4	23.1	23.0	9.93	4.82	2.74
100	6.80	6.77	6.66	6.40	5.93	4.92	4.06	5.16	6.54	8.78	17.8	23.8	22.5	20.8	12.1	7.37	5.98	4.45	3.25
105	0.00	0.00	0.00	0.00	0.00	0.00	0.00	0.00	0.00	0.00	0.00	0.00	0.00	0.00	0.00	0.00	0.00	0.00	0.00
110	0.00	0.00	0.00	0.00	0.00	0.00	0.00	0.00	0.00	0.00	0.00	0.00	0.00	0.00	0.00	0.00	0.00	0.00	0.00
115	0.00	0.00	0.00	0.00	0.00	0.00	0.00	0.00	0.00	0.00	0.00	0.00	0.00	0.00	0.00	0.00	0.00	0.00	0.00
120	0.00	0.00	0.00	0.00	0.00	0.00	0.00	0.00	0.00	0.00	0.00	0.00	0.00	0.00	0.00	0.00	0.00	0.00	0.00
125	0.00	0.00	0.00	0.00	0.00	0.00	0.00	0.00	0.00	0.00	0.00	0.00	0.00	0.00	0.00	0.00	0.00	0.00	0.00
130	0.00	0.00	0.00	0.00	0.00	0.00	0.00	0.00	0.00	0.00	0.00	0.00	0.00	0.00	0.00	0.00	0.00	0.00	0.00
135	0.00	0.00	0.00	0.00	0.00	0.00	0.00	0.00	0.00	0.00	0.00	0.00	0.00	0.00	0.00	0.00	0.00	0.00	0.00
140	0.00	0.00	0.00	0.00	0.00	0.00	0.00	0.00	0.00	0.00	0.00	0.00	0.00	0.00	0.00	0.00	0.00	0.00	0.00
145	0.00	0.00	0.00	0.00	0.00	0.00	0.00	0.00	0.00	0.00	0.00	0.00	0.00	0.00	0.00	0.00	0.00	0.00	0.00
150	0.00	0.00	0.00	0.00	0.00	0.00	0.00	0.00	0.00	0.00	0.00	0.00	0.00	0.00	0.00	0.00	0.00	0.00	0.00
155	0.00	0.00	0.00	0.00	0.00	0.00	0.00	0.00	0.00	0.00	0.00	0.00	0.00	0.00	0.00	0.00	0.00	0.00	0.00
160	0.00	0.00	0.00	0.00	0.00	0.00	0.00	0.00	0.00	0.00	0.00	0.00	0.00	0.00	0.00	0.00	0.00	0.00	0.00
165	0.00	0.00	0.00	0.00	0.00	0.00	0.00	0.00	0.00	0.00	0.00	0.00	0.00	0.00	0.00	0.00	0.00	0.00	0.00
170	0.00	0.00	0.00	0.00	0.00	0.00	0.00	0.00	0.00	0.00	0.00	0.00	0.00	0.00	0.00	0.00	0.00	0.00	0.00
175	0.00	0.00	0.00	0.00	0.00	0.00	0.00	0.00	0.00	0.00	0.00	0.00	0.00	0.00	0.00	0.00	0.00	0.00	0.00
180	0.00	0.00	0.00	0.00	0.00	0.00	0.00	0.00	0.00	0.00	0.00	0.00	0.00	0.00	0.00	0.00	0.00	0.00	0.00

C Range: 0 - 360DEG
 C Interval: 15.0DEG
 Test Speed: HIGH
 Temperature:25.3DEG
 Operators:YU
 Test Date:2019-01-11

γ Range: 0 - 180DEG
 γ Interval: 1.0DEG
 Test System:EVERFINE GO-2000B_V1 SYSTEM V2.0.287
 Humidity:65.0%
 Test Distance:8.000m [K=1.0000]
 Remarks:

LUMINOUS DISTRIBUTION INTENSITY DATA

Test:U:221.0V I:0.0560A P:11.90W PF:0.9560 Lamp Flux:1800.06x1 lm		
NAME: T8 120 ALTO FLUJO 12W	TYPE:T8 120 ALTO FLUJO 12W	WEIGHT:
SPEC.:	DIM.:	SERIAL No.:
MFR.: DURALED	SUR.:	PROTECTION ANGLE:

Table--2

UNIT: cd

C (DEG) γ (DEG)	285	300	315	330	345														
0	593	594	594	596	595														
5	594	596	591	585	582														
10	591	582	563	557	554														
15	581	555	545	554	558														
20	562	537	549	564	564														
25	532	523	553	556	546														
30	496	515	536	518	487														
35	465	503	493	460	463														
40	432	477	427	443	450														
45	407	426	402	429	416														
50	381	349	383	375	349														
55	346	316	331	305	324														
60	295	290	255	277	231														
65	198	215	219	201	231														
70	145	164	166	157	141														
75	102	89.6	90.0	128	123														
80	42.7	48.7	41.2	20.3	13.8														
85	16.4	10.2	10.8	12.2	13.1														
90	5.87	10.7	12.5	13.5	14.1														
95	4.21	5.83	6.86	8.48	9.42														
100	4.22	5.35	5.94	6.16	6.17														
105	0.00	0.00	0.00	0.00	0.00														
110	0.00	0.00	0.00	0.00	0.00														
115	0.00	0.00	0.00	0.00	0.00														
120	0.00	0.00	0.00	0.00	0.00														
125	0.00	0.00	0.00	0.00	0.00														
130	0.00	0.00	0.00	0.00	0.00														
135	0.00	0.00	0.00	0.00	0.00														
140	0.00	0.00	0.00	0.00	0.00														
145	0.00	0.00	0.00	0.00	0.00														
150	0.00	0.00	0.00	0.00	0.00														
155	0.00	0.00	0.00	0.00	0.00														
160	0.00	0.00	0.00	0.00	0.00														
165	0.00	0.00	0.00	0.00	0.00														
170	0.00	0.00	0.00	0.00	0.00														
175	0.00	0.00	0.00	0.00	0.00														
180	0.00	0.00	0.00	0.00	0.00														

C Range: 0 - 360DEG
 C Interval: 15.0DEG
 Test Speed: HIGH
 Temperature:25.3DEG
 Operators:YU
 Test Date:2019-01-11

γ Range: 0 - 180DEG
 γ Interval: 1.0DEG
 Test System:EVERFINE GO-2000B_V1 SYSTEM V2.0.287
 Humidity:65.0%
 Test Distance:8.000m [K=1.0000]
 Remarks: